



Tasker Road NW3

Parkheath
Sold on Service





Tasker Road, NW3

Asking Price £500,000

Leasehold

- A stylish 1 bedroom plus study/spare room upper maisonette
- Situated in an end of terrace period conversion
- 14ft reception with wood floors and scenic views
- Over 600 sq ft of bright accommodation on the 2nd and 3rd floors (top)
- Shower room plus separate w/c
- 7ft kitchen with a window
- Both bedrooms on the top floor
- 189 years from 1984
- Tranquil location close to Belsize Park underground
- Close proximity to South End Green and Hampstead Heath

Belsize Park/Hampstead
 208 Haverstock Hill
 NW3 2AG
 Sales 020 7431 1234
 Lettings 020 7431 3104
nw3@parkheath.com

South/West Hampstead
 192 West End Lane
 NW6 1SG
 Sales & Lettings
 Tel 020 7794 7111
192@parkheath.com

Kensal Rise
 54-56 Chamberlayne Rd
 NW10 3JH
 Tel 020 8960 4845
kensal@parkheath.com

Property Management
 192 West End Lane
 NW6 1SG
 020 7433 6174
pm@parkheath.com

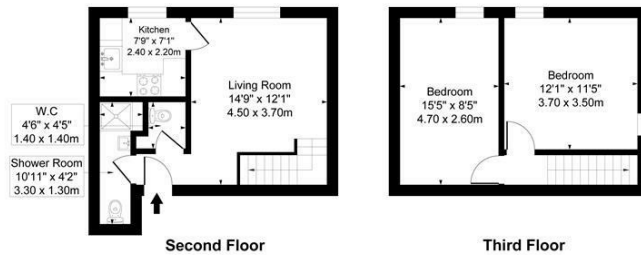
www.parkheath.com

Parkheath
Sold on Service

Camden Tax band D

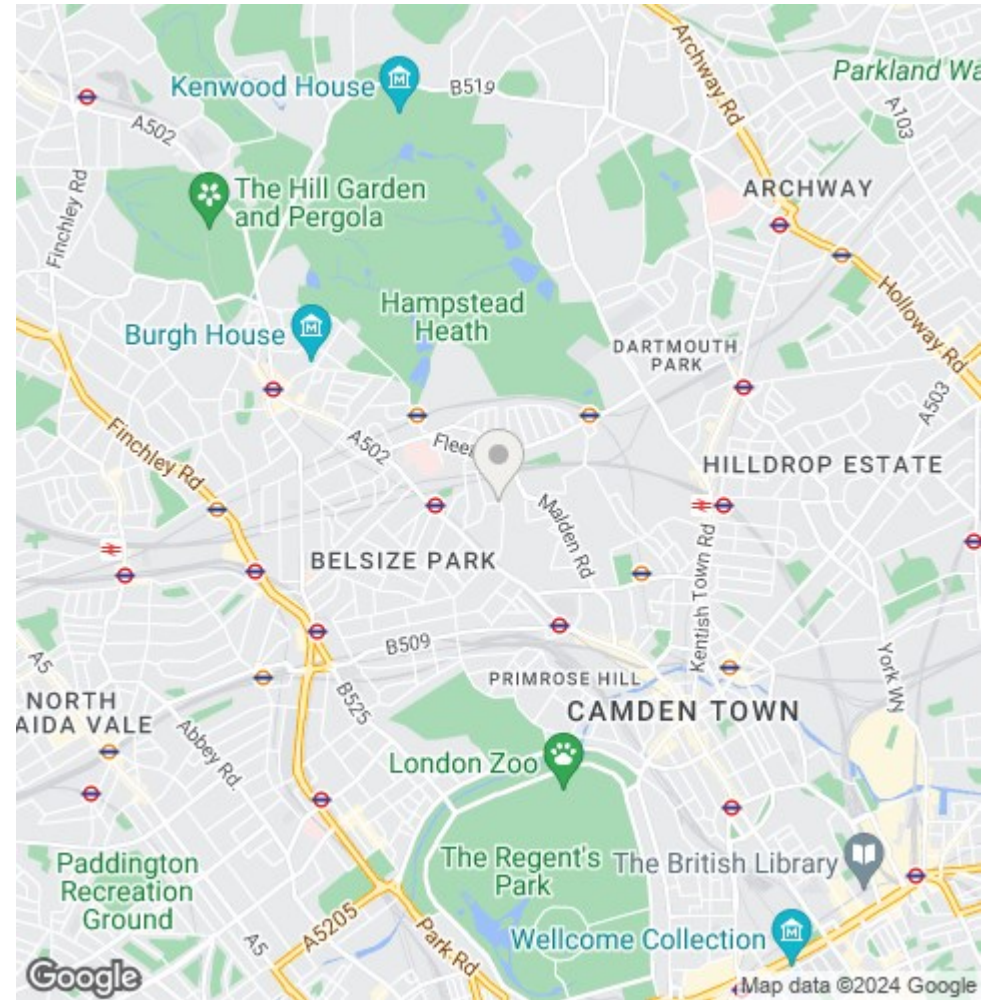
Tasker Road

Approximate Gross Internal Area = 57.00 sq m / 610 sq ft



This plan is for layout guidance only. Drawn in accordance with RICS guidelines. Not drawn to scale unless stated. Windows & door openings are approximate. Whilst every care is taken in the preparation of this plan, please check all dimensions, shapes & bearings before making any decisions reliant upon them.

ELLIE CLAIRE PHOTOGRAPHY LTD
www.ellieclairephotography.com



The particulars do not constitute part of an offer or contract. The particulars, including text, photographs and plans, are for the guidance only of prospective purchasers/tenants and must not be relied upon as statements of fact. The descriptions provided therein represent the opinion of the author and whilst given in good faith should not be construed as statements of fact. Nothing in these particulars shall be deemed a statement that the property is in good condition or otherwise or that any services or facilities are in good working order. All measurements are approximate